



TAF I p48 Polyclonal Antibody

Catalog No	YP-Ab-02065
Isotype	IgG
Reactivity	Human;Rat
Applications	WB;IHC;IF;ELISA
Gene Name	TAF1A
Protein Name	TATA box-binding protein-associated factor RNA polymerase I subunit A
Immunogen	The antiserum was produced against synthesized peptide derived from human TAF1A. AA range:301-350
Specificity	TAF I p48 Polyclonal Antibody detects endogenous levels of TAF I p48 protein.
Formulation	Liquid in PBS containing 50% glycerol, 0.5% BSA and 0.02% sodium azide.
Source	Polyclonal, Rabbit,IgG
Purification	The antibody was affinity-purified from rabbit antiserum by affinity-chromatography using epitope-specific immunogen.
Dilution	WB: 1/500 - 1/2000. IHC: 1/100 - 1/300. ELISA: 1/20000.. IF 1:50-200
Concentration	1 mg/ml
Purity	≥90%
Storage Stability	-20°C/1 year
Synonyms	TAF1A; TATA box-binding protein-associated factor RNA polymerase I subunit A; RNA polymerase I-specific TBP-associated factor 48 kDa; TAFI48; TATA box-binding protein-associated factor 1A; TBP-associated factor 1A; Transcription factor SL1;
Observed Band	53kD
Cell Pathway	Nucleus.
Tissue Specificity	Embryo,Skin,
Function	function:Component of the transcription factor SL1/TIFIB complex involved in the assembly of the PIC (preinitiation complex).,subunit:Component of the transcription factor SL1/TIFIB complex which is composed of TBP and at least TAF1A, TAF1B and TAF1C. In the complex, interacts directly with TBP, TAF1B and TAF1C. Interaction of the SL1/TIFIB subunits with TBP excludes interaction with the transcription factor IID (TFIID) subunits. This mutually exclusive binding directs the formation of promoter and RNA polymerase-selective TBP-TAF complexes.,
Background	This gene encodes a subunit of the RNA polymerase I complex, Selectivity Factor I (SLI). The encoded protein is a TATA box-binding protein-associated factor that plays a role in the assembly of the RNA polymerase I preinitiation



complex. Alternate splicing results in multiple transcript variants encoding multiple isoforms.[provided by RefSeq, Jan 2011],

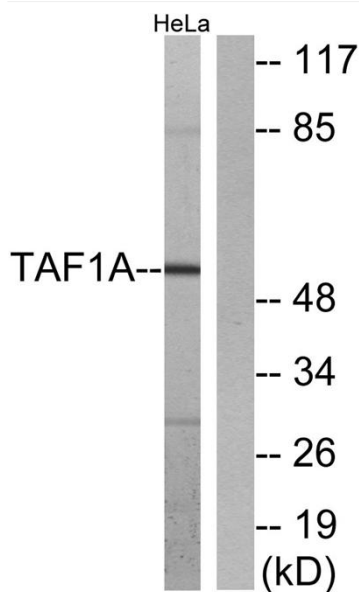
matters needing attention

Avoid repeated freezing and thawing!

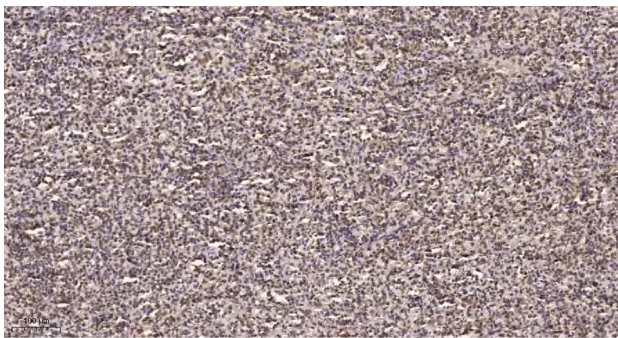
Usage suggestions

This product can be used in immunological reaction related experiments. For more information, please consult technical personnel.

Products Images



Western blot analysis of lysates from HeLa cells, using TAF1A Antibody. The lane on the right is blocked with the synthesized peptide.



Immunohistochemical analysis of paraffin-embedded human spleen. 1, Tris-EDTA, pH9.0 was used for antigen retrieval. 2 Antibody was diluted at 1:200(4° overnight).3, Secondary antibody was diluted at 1:200(room temperature, 45min).